



# State Progress on the Individual Plan of Study

# Our Vision for Kansas ...



## Kansas leads the **world** in the success of each student





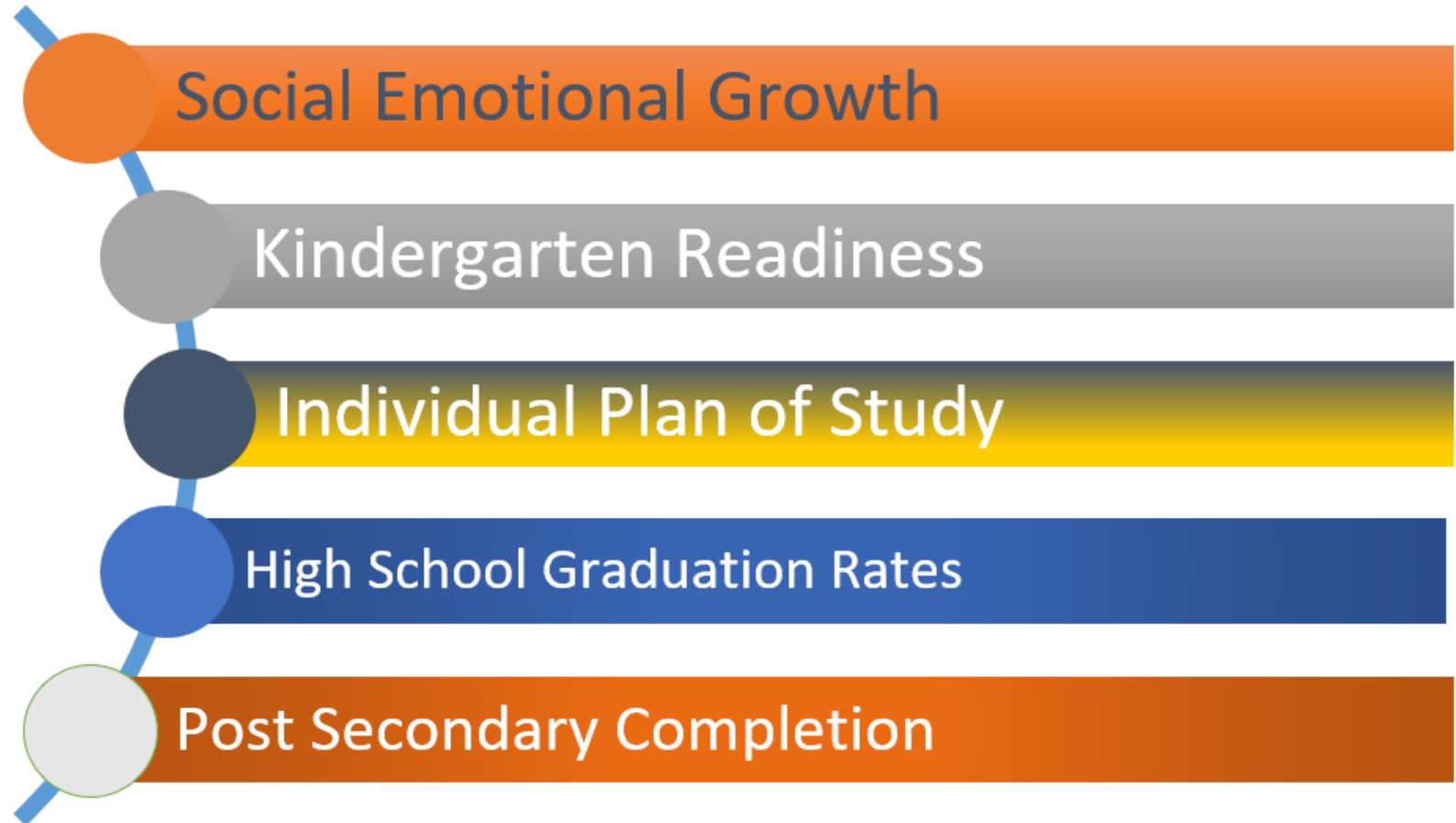
# Kansas Education Systems Accreditation



# Creating a Vision for Kansas – State Outcomes



#KansansCan | KSDE | [www.ksde.org](http://www.ksde.org)



# What is an Individual Plan of Study?

An (IPS) is both the actual product a student develops and a process the school implements to guide students in developing their unique IPS.

A student's IPS is developed cooperatively between the student, school staff members and family members and contains a minimum of these four components to fulfill state requirements:

1. A graduated series of strength finders and career interest inventories to help students identify preference toward career clusters.
2. Eighth- through 12th-grade course builder function with course selections based on career interests.
3. A general postsecondary plan (workforce, military, certification program, two-year college, four-year college).
4. A portable electronic portfolio.



# 4 Models of Implementation

1. Counselor Centered (IPS curriculum implemented by counselor)
2. Career Advisor System (all school staff implement IPS curriculum)
3. Career Advocates (individuals hired to implement IPS curriculum)
4. Hybrid (any combination of models 1 – 3)





# Hybrid

- Schools with fully implemented IPS report the value and strength of involving all staff in IPS development
- How can schools most effectively address each type of activity using the hybrid model?

One on One (Counselor or Career Advocate)	Small Group- Advisory or Seminar	Direct Instruction- CTE or Core Teacher
Set Goals and create/update postsecondary plan	Identify Career Interests, abilities and preferences	Career Exploration
Select Courses	Explore/research post-secondary options	Explore/research post-secondary options
	Develop portfolio	Develop portfolio



# Timeline

2016 - state preferred vendor for Individual Plans of Study was selected.  
Schools aren't required to use a vendor for an IPS product

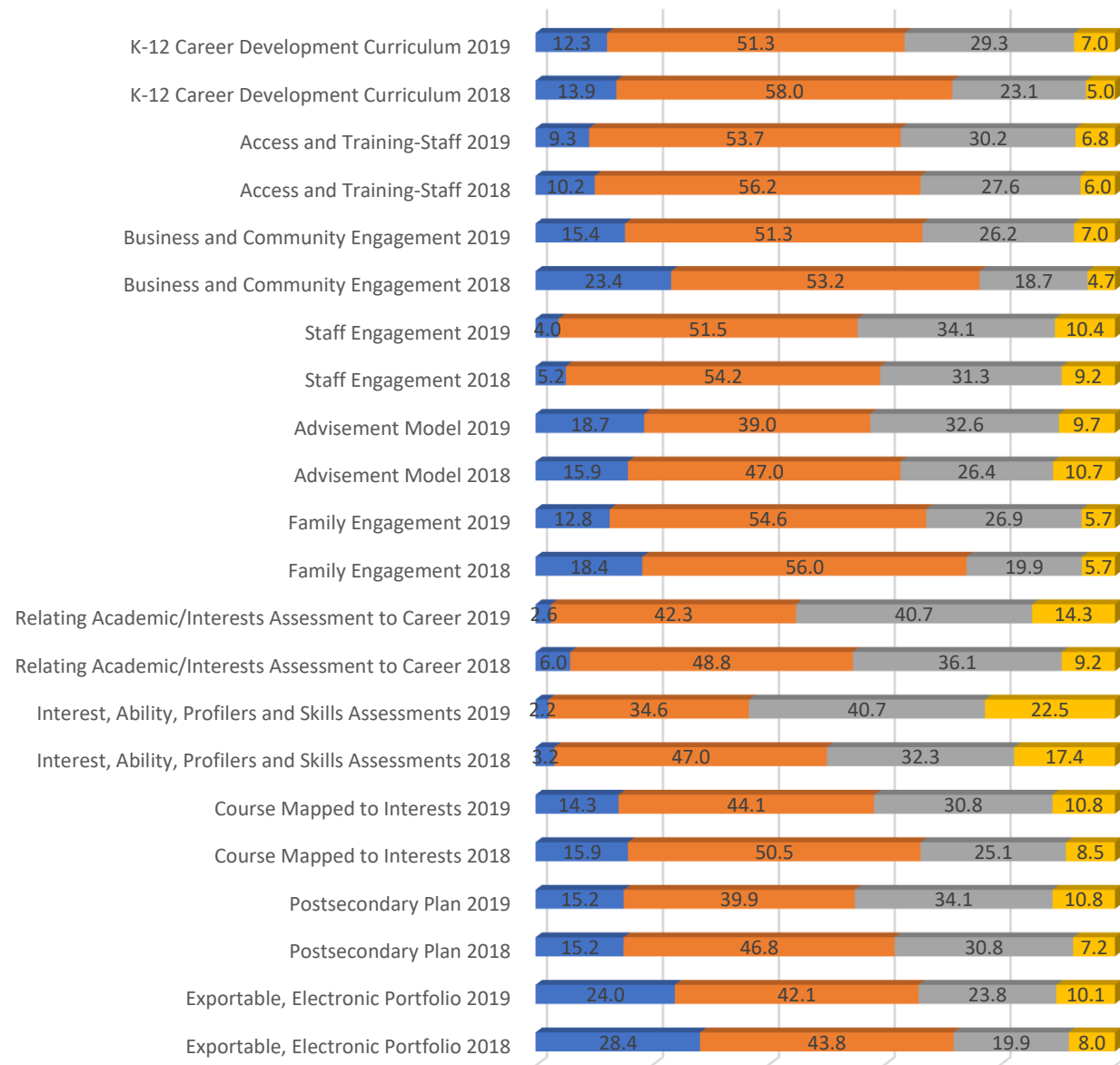
2017- 2018 - school year every middle and high school in  
Kansas will have an IPS product and process in place

2018- 2019 - school year every middle and high school  
student in Kansas will have an IPS.





## Q7: Level of IPS Implementation (%)

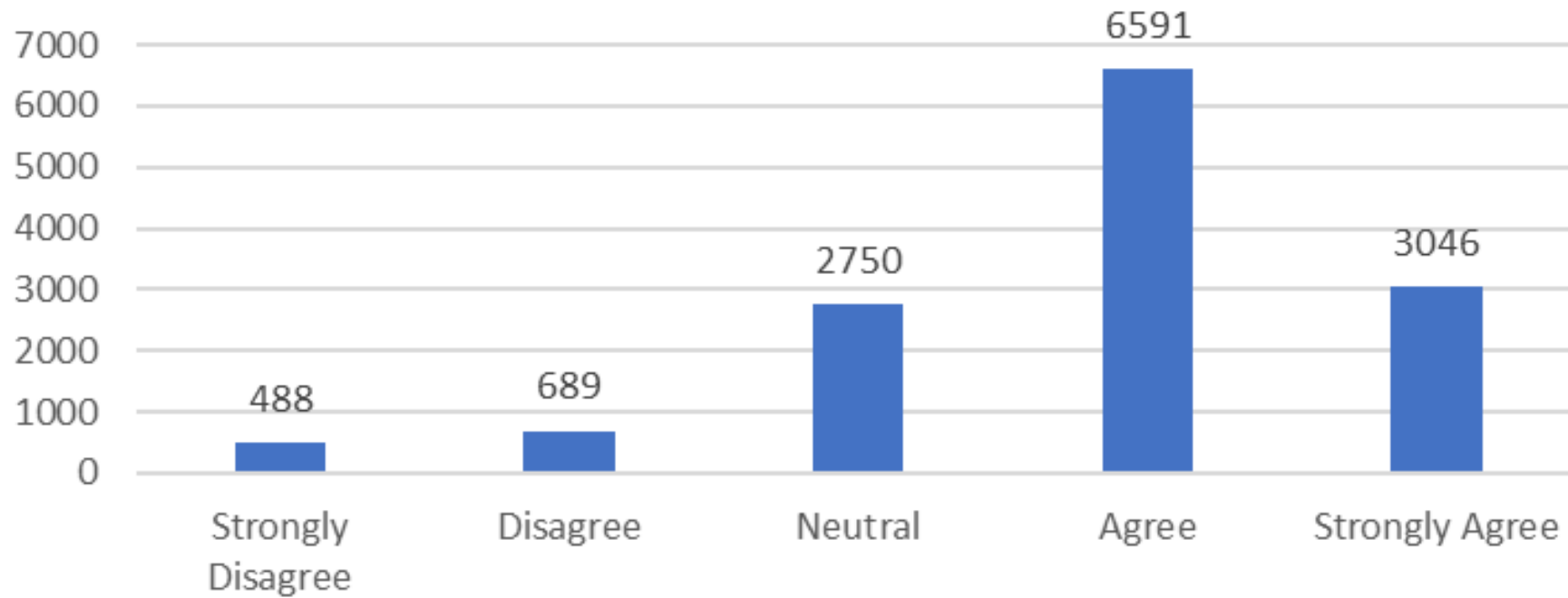


■ No Evidence ■ Implementing ■ Transitioning ■ Modeling

**Kansas leads the world in the success of each student.**

#KansansCan

At my school, I have been encouraged to think about possible career choices and the education/training that I will need after high school.

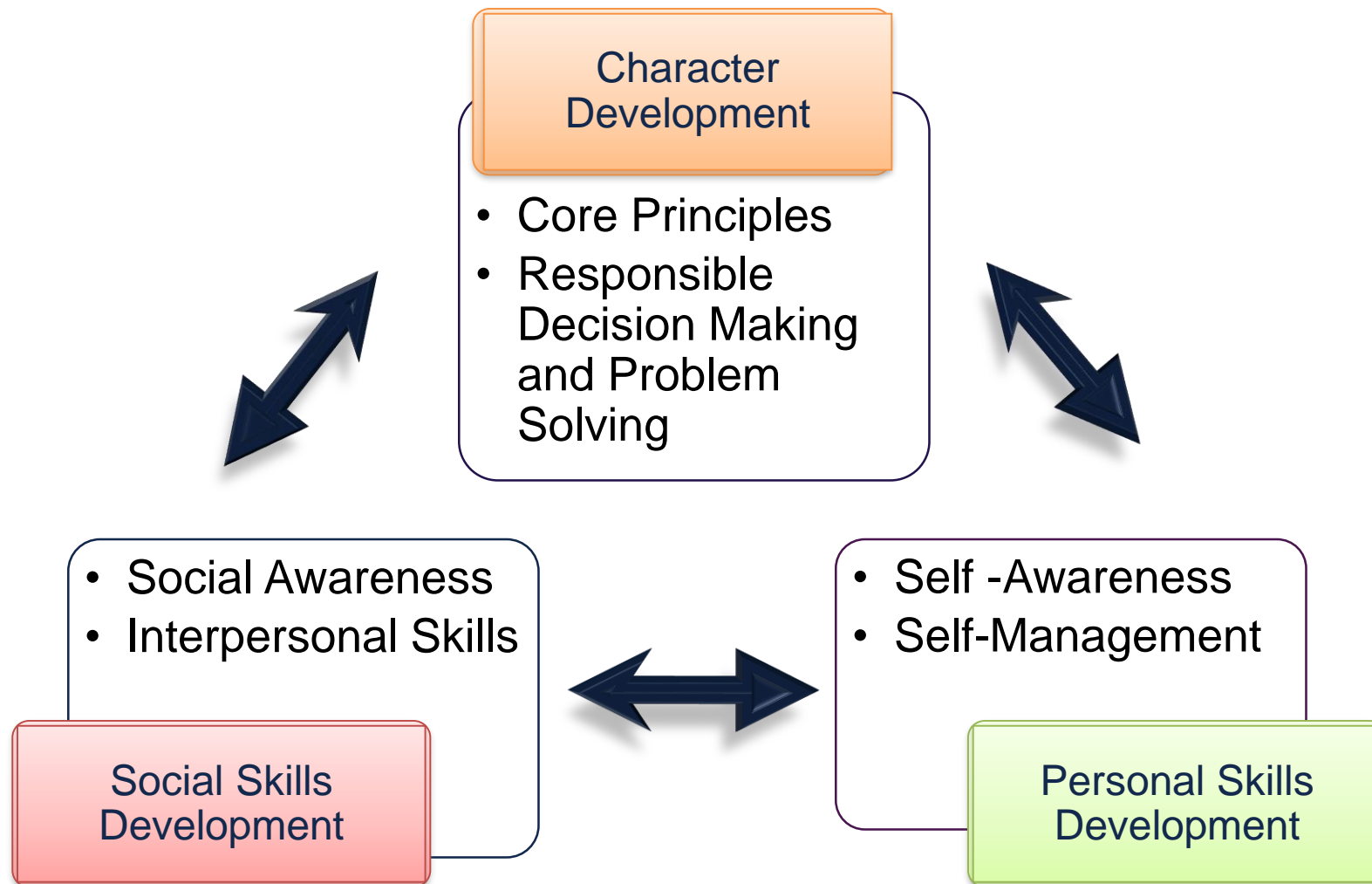


**Kansas leads the world in the success of each student.**

**#KansansCan**

# Kansans Can School Redesign Principles

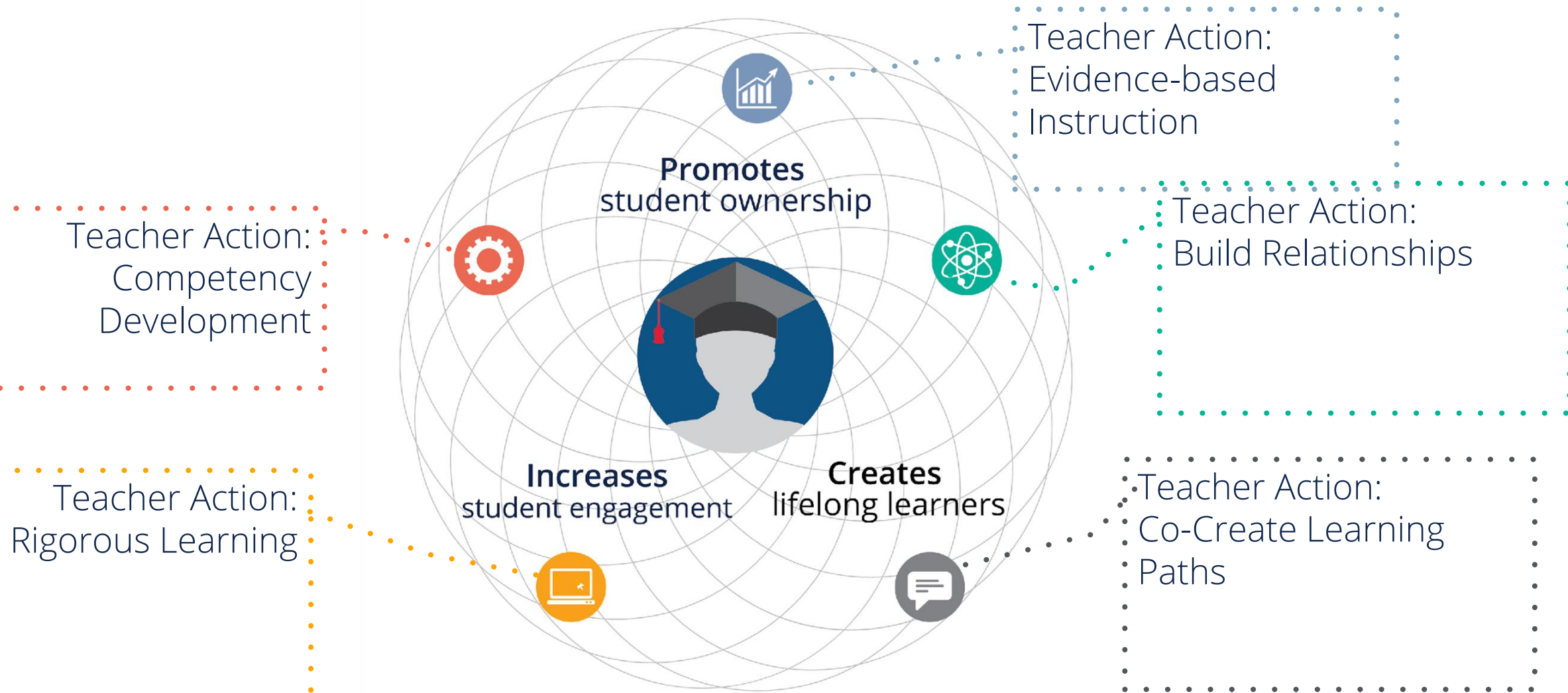
Student Success Skills	Family, Business, and Community Partnerships
There is an integrated approach to develop student social-emotional learning.	Partnerships are based on mutually beneficial relationships and collaboration.
Personalized Learning	Real World Application
Teachers support students to have choice over their time, place, pace and path.	Project-based learning, internships, and civic engagement makes learning relevant.

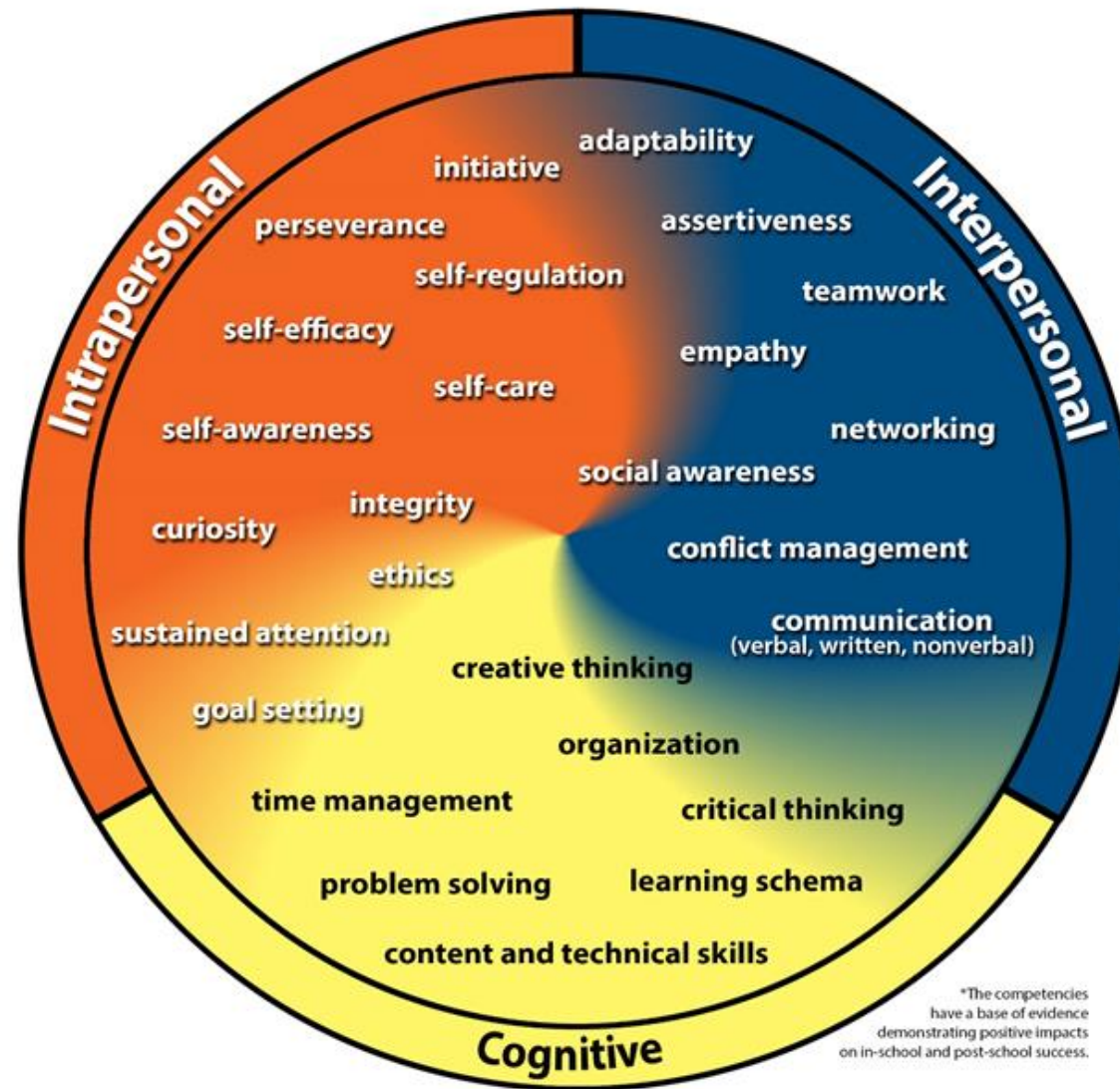


## Kansas Social, Emotional, and Character Education Standards



# Kansans Can: Personalize Learning





\*The competencies have a base of evidence demonstrating positive impacts on in-school and post-school success.

Gaumer Erickson, A.S., Noonan, P., & Soukup, J.H. (2016). College & Career Competency Wheel (3rd ed.). Lawrence, KS: University of Kansas, Center for Research on Learning. Derived in part from Pellegrino, J.W., & Hilton, M.L. (Eds.). (2012). *Education for Life and Work: Developing Transferable Knowledge and Skills in the 21st Century*. Washington, DC: National Academies Press.

For more information, visit:  
<http://ResearchCollaboration.org/page/CCCFramework>





EMPLOYABILITY SKILLS		NOT VERY LIKE ME → LIKE ME				
Effective Relationships	<b>Interpersonal Skills</b>					
	• Teamwork	①	②	③	④	⑤
	• Customer service	①	②	③	④	⑤
	<b>Personal Qualities</b>					
	• Initiative	①	②	③	④	⑤
	• Adaptability	①	②	③	④	⑤
Workplace Skills	• Professionalism	①	②	③	④	⑤
	<b>Resource Management</b>					
	• Manages time, money, resources and personnel.	①	②	③	④	⑤
	<b>Information Use</b>					
	• Locates, organizes, analyzes, uses and communicates information.	①	②	③	④	⑤
	<b>Communication</b>					
	• Verbal communication	①	②	③	④	⑤
	• Listening	①	②	③	④	⑤
	• Comprehends written material.	①	②	③	④	⑤
	• Conveys information in writing.	①	②	③	④	⑤
	<b>Systems Thinking</b>					
	• Understands, uses, monitors and improves systems.	①	②	③	④	⑤
Applied Knowledge	<b>Technology Use</b>					
	• Understands and uses technology.	①	②	③	④	⑤
	<b>Applied Academic Skills</b>					
	• Academic application	①	②	③	④	⑤
	<b>Critical Thinking</b>					
	• Problem solving	①	②	③	④	⑤
	• Creative thinking	①	②	③	④	⑤
	• Goal setting	①	②	③	④	⑤

**Kansas leads the world in the success of each student.**

**#KansansCan**

# Employability Skills Framework Crosswalk

Resource	Applied Knowledge		Effective Relationships		Workplace Skills				
	Applied Academic Skills	Critical Thinking	Interpersonal Skills	Personal Qualities	Resource Management	Information Use	Communication	Systems Thinking	Technology Use
Kansans Can Competency Framework	X	X	X	X	X	X	X	X	X
Kansans Can Competency Framework	Content/Technical Communication Problem Solving Critical Thinking Creative Thinking	Critical Thinking Creative Thinking Problem Solving Learning Schema Organization Goal Setting Sustained Attention Assertiveness Self-Regulation	Teamwork Empathy Conflict Management Networking Social Awareness Assertiveness Teamwork	Ethics Adaptability Self-Regulation Integrity Initiative Self-Efficacy Perseverance Self-Awareness Self-Care Curiosity Sustained Attention Teamwork Empathy	Time Management Self-Regulation Problem Solving Organization Assertiveness	Critical Thinking Learning Schema Organization Communication	Communication Assertiveness Social Awareness	Teamwork Social Awareness Self-Regulation Adaptability	Content/Technical
(SECD) Social Emotional and Character Development Standards	Responsible Decision Making & Problem Solving Self-Management	Self-Awareness Problem Solving Responsible Decision Making & Problem Solving	Core Principles Interpersonal Skills Self-Management Social Awareness Self-Awareness	Core Principles Self-Awareness Social Awareness Interpersonal Skills Self-Management	Responsible Decision Making & Problem Solving Self-Management	Social Awareness Self-Management Responsible Decision Making & Problem Solving	Social Awareness Interpersonal Skills Self-Awareness	Responsible Decision Making & Problem Solving	Core Principles Responsible Decision Making & Problem Solving





KANSAS STATE DEPARTMENT OF EDUCATION

# **MEASURING AND REFLECTING STUDENT LEARNING**

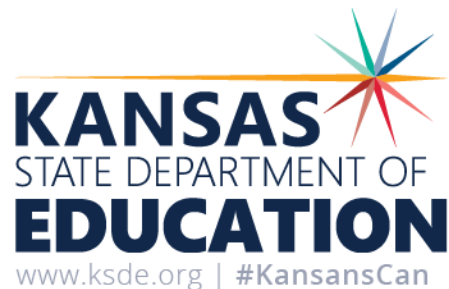
Work-based Experience  
Portfolio and Employability  
Skills Rubric

**Kansas leads the world in the success of each student.**

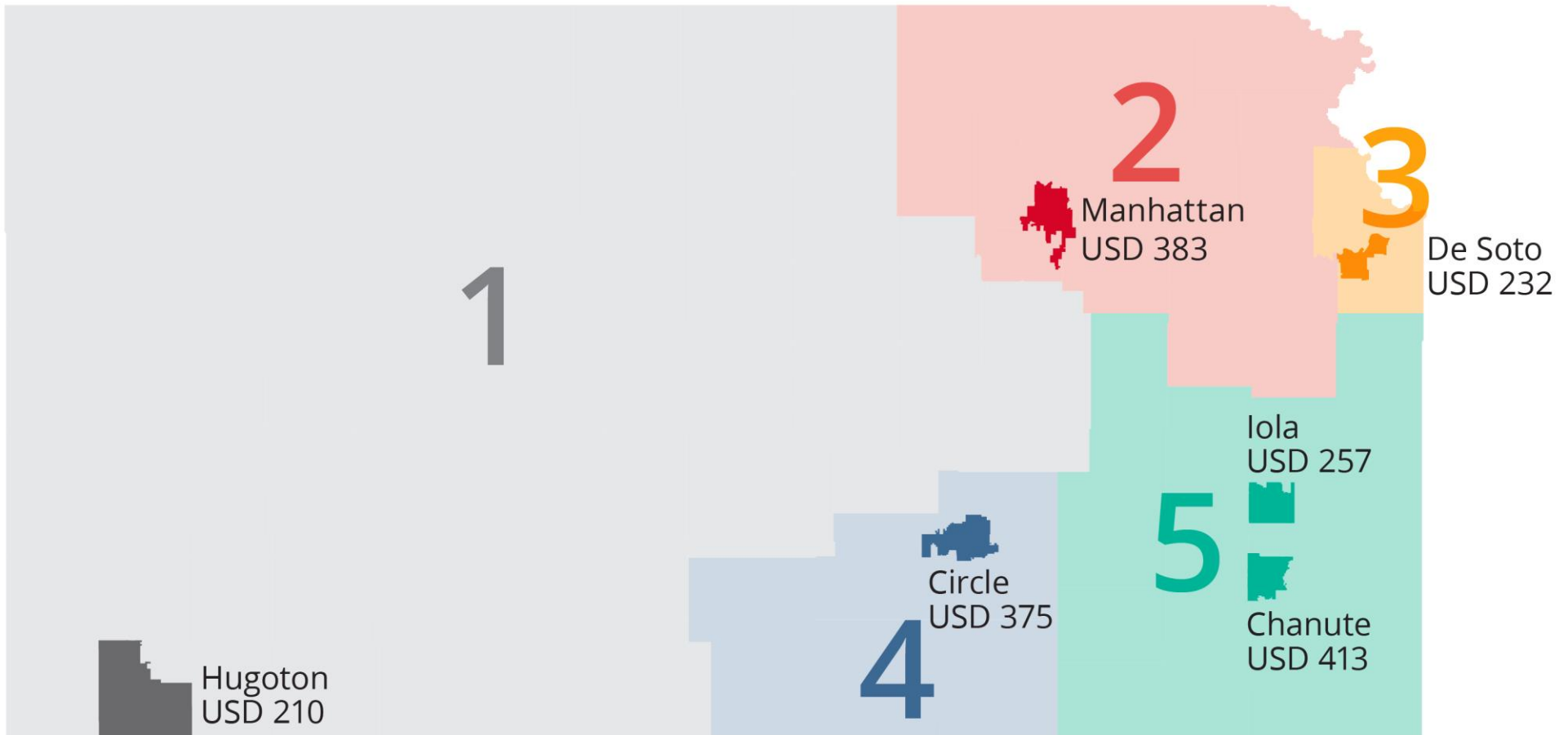
**#KansansCan**



# Scale High Quality Work-Based Learning Pilot



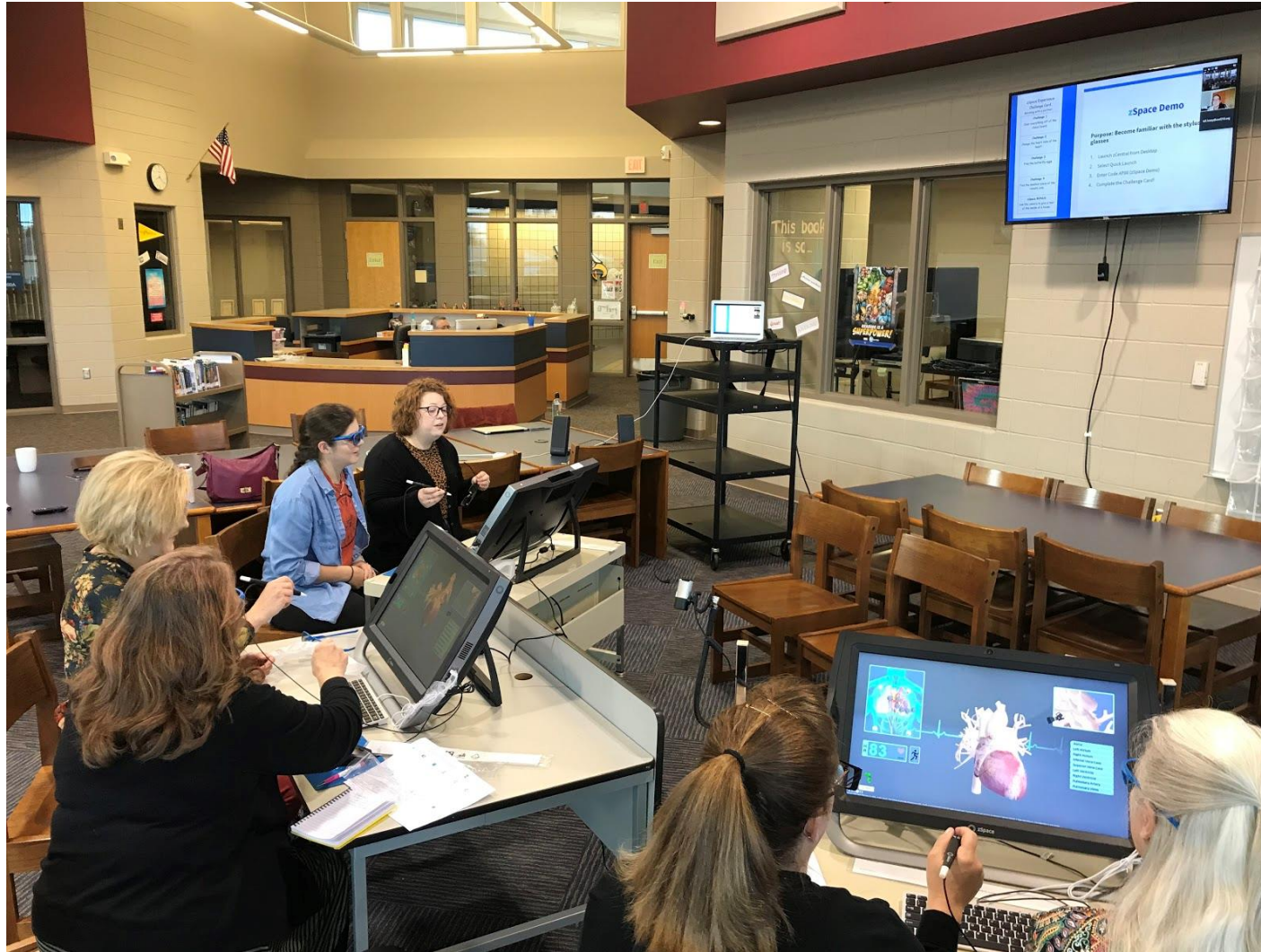
*Kansas leads the world in the success of each student.*



# Work-Based Learning Pilot Schools



# Teachers in Training with zSpace Through Zoom





# Cloud 9 Coffee Shop

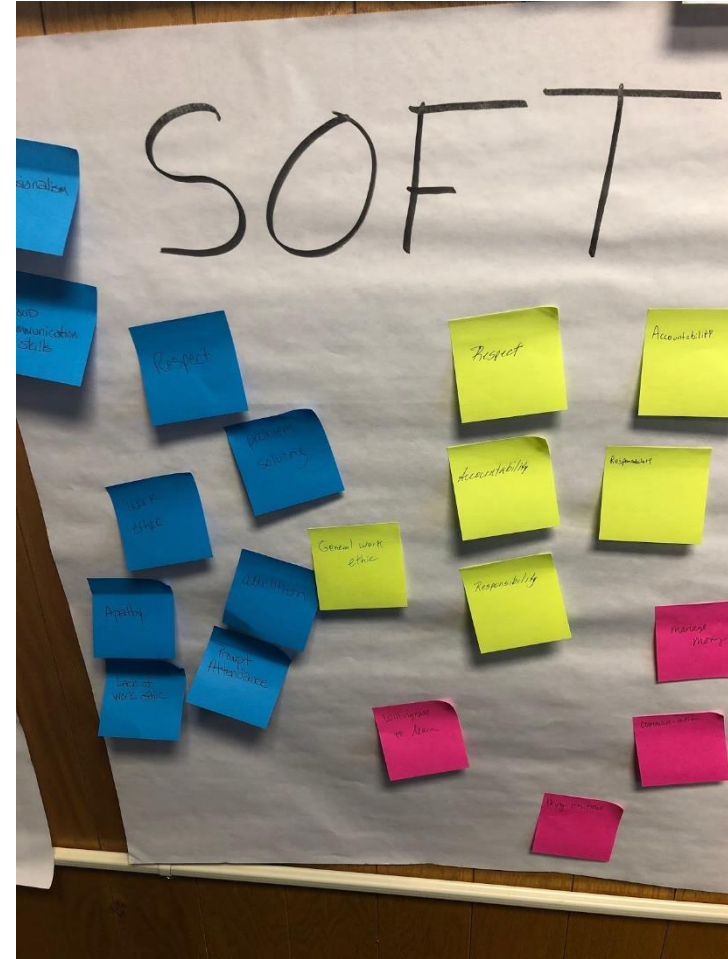


# Adulthood Day and More Ways to Win Workshop





# Hugoton District Site Council



- Survey - <https://forms.gle/LcBSqX25Ydp5gYfd7>
- Information links -  
<https://drive.google.com/file/d/152H15FmbqwZ0qVnDLaQhIV5HBIFO1PBe/view?usp=sharing>
- Star Rubric -  
<https://www.ksde.org/Portals/0/Communications/Rubrics/IPS%20KC%20Star%20Recognition%20Rubric.pdf?ver=2020-09-21-162057-310>





Stacy Smith  
Assistant Director, IPS and CTE  
Career, Standards and Assessment Services  
(785) 296-4351  
[slsmith@ksde.org](mailto:slsmith@ksde.org)

Natalie Clark  
IPS Coordinator  
Career, Standards and Assessment Services  
(785) 296-4916  
[ndclark@ksde.org](mailto:ndclark@ksde.org)

The Kansas State Department of Education does not discriminate on the basis of race, color, national origin, sex, disability or age in its programs and activities and provides equal access to the Boy Scouts and other designated youth groups. The following person has been designated to handle inquiries regarding the nondiscrimination policies: KSDE General Counsel, Office of General Counsel, KSDE, Landon State Office Building, 900 S.W. Jackson, Suite 102, Topeka, KS 66612, (785) 296-3201.

